

**Instruction 510-1101**  
**04.07.2025**

2025 S&S® Cycle, Inc.

All rights reserved.  
Printed in the U.S.A.



# Installation Instructions:

**Full Length Qualifier 2-1 for Indian - Race Only**

**Fits 2020-'25 Indian® Challenger®, 2022-'25 Pursuit® Models,  
and 2025 Chieftain and Roadmaster with Powerplus Motors  
(part numbers 550-1130, 550-1131)**



**The S&S Cycle Full-Length Qualifier Exhaust for Indian Motorcycles is here— it delivers all the great sound and performance of the original Qualifier, but it extends past the saddlebag for a clean look. With signature S&S performance and a deep, throaty sound, this system doesn't just turn heads—it demands attention. Upgrade your Indian with an S&S Cycle exhaust, you will be glad you did.**

### **S&S Qualifier 2-1 for Indian Challenger**

1. Remove the stock exhaust system from your motorcycle following your factory service manual. If you haven't already removed your oxygen sensors from the headers, do so now.
2. Remove the saddlebags from your motorcycle following your factory service manual.

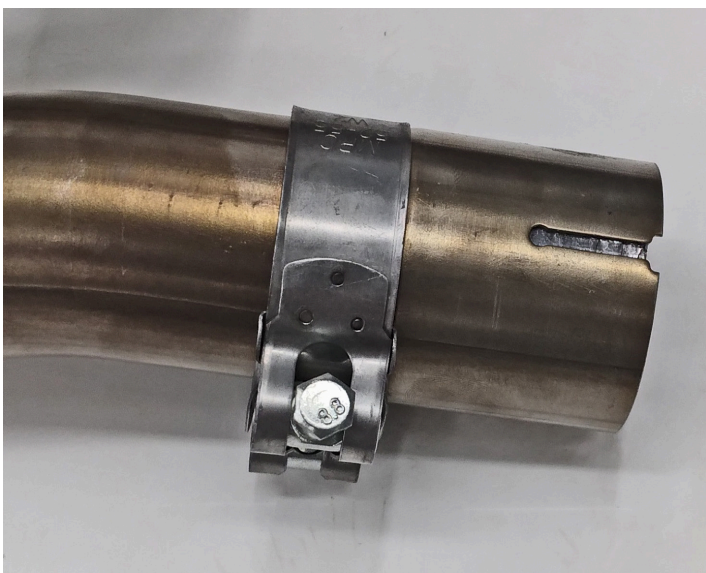
### **S&S Exhaust System Installation**

1. Inspect exhaust gaskets in cylinder head ports for damage. If damaged, purchase new gaskets from your Indian Motorcycle dealer.
2. Install supplied gasket into the S&S header collector. See Picture 1.



*Picture 1*

3. Install the supplied clamp over the header. See Picture 2



*Picture 2*

4. Install the front header onto the motorcycle but leave loose.

5. Install rear header onto motorcycle but leave it loose.

6. Pictures 3 & 4 shows front and rear headers installed loosely on the motorcycle.

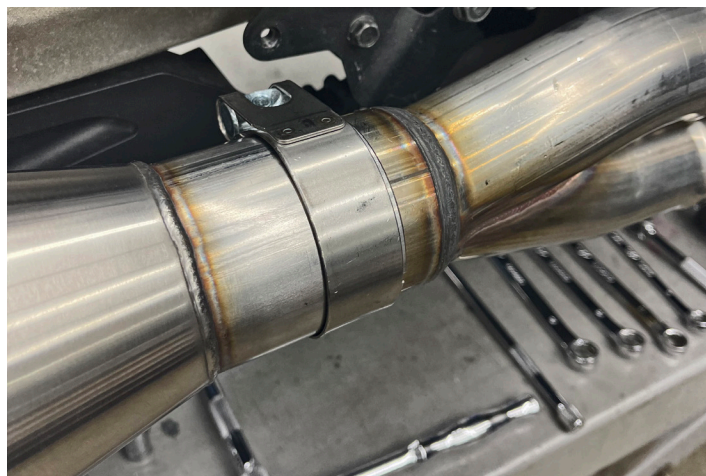


*Picture 3*



*Picture 4*

7. Install the muffler clamp over the muffler and onto the header/collector. See Picture 5



*Picture 5*

8. Install the supplied button head screws through the rear muffler mounting bracket and into the muffler. Torque screws to 15 ft lbs. **See Picture 6**



*Picture 6*

9. Install all three heat shields onto the headers and collector. **Picture 7** shows the final install and approximate gap between each.



*Picture 7*

10. Re-install the factory floorboard/brake using one supplied washer per bolt to space the floorboard/brake away from the exhaust. **See Picture 8**



*Picture 8*

11. Re-install the right side saddlebag following your factory service manual.

12. Wipe down exhaust to remove all grease, dirt and fingerprints prior to starting the bike.

### **S&S Saddlebag Mount Installation**

1. Remove front bag mount standoff. **See Picture 9.** You will not need the billet aluminum piece to install the S&S bag mount but you will need the threaded stud.



*Picture 9*

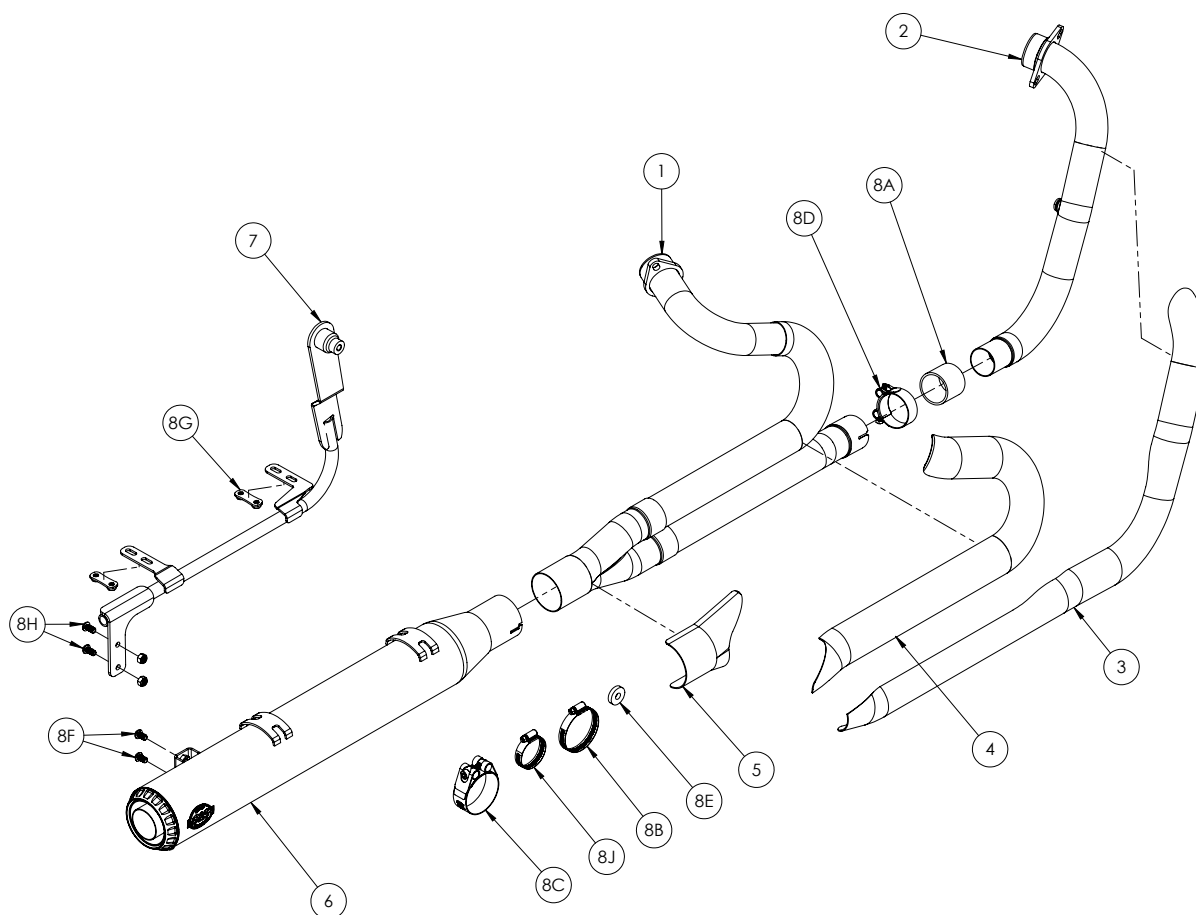
2. Install the S&S left side bag mount using the stock threaded stud (See pictures **Picture 10** and **11**) and the supplied button head screws and nuts. Torque screws to 15 ft lbs.
3. Install the stock rubber washer to the top front bag mount (See **Picture 10**) and install the saddle bag using the stock hardware for the top two mounts and the 4 stock fasteners that screw in the bottom of the saddlebags.



*Picture 10*



*Picture 11*



FULL LENGTH QUALIFIER - RACE ONLY			
ITEM NO.	PART NUMBER	DESCRIPTION	QTY.
1	551-2351	PIPE, HEADER, 2 INTO 1, LONG QUALIFIER, WELDED, INDIAN® CHALLENGER	1
2	551-2335	TUBE, FRONT, HEAD PIPE, 2 INTO 1, LONG QUALIFIER, WELDMENT, 1.875 X .049 WALL, 2020-UP INDIAN® CHALLENGER	1
3	551-2352	HEAT SHIELD, FRONT, LONG QUALIFIER, 2 INTO 1, BRUSHED, STAINLESS STEEL, INDIAN® CHALLENGER	1
	551-2353	HEAT SHIELD, FRONT, LONG QUALIFIER, 2 INTO 1, BLACK, STAINLESS STEEL, INDIAN® CHALLENGER	
4	551-2354	HEAT SHIELD, REAR, LONG QUALIFIER, 2 INTO 1, BRUSHED, STAINLESS STEEL, INDIAN® CHALLENGER	1
	551-2355	HEAT SHIELD, REAR, LONG QUALIFIER, 2 INTO 1, BLACK, STAINLESS STEEL, INDIAN® CHALLENGER	
5	551-2144	HEAT SHIELD, COLLECTOR, 2 INTO 1, QUALIFIER, BRUSHED, STAINLESS STEEL, INDIAN® CHALLENGER	1
	551-2145	HEAT SHIELD, COLLECTOR, 2 INTO 1, QUALIFIER, BLACK, STAINLESS STEEL, INDIAN® CHALLENGER	
6	551-2344	MUFFLER, ASSEMBLY, 2 INTO 1, LONG QUALIFIER, RACE ONLY, 2.5" INLET, 4" MUFFLER, BRUSHED, INDIAN® CHALLENGER	1
	551-2345	MUFFLER, ASSEMBLY, 2 INTO 1, LONG QUALIFIER, RACE ONLY, 2.5" INLET, 4" MUFFLER, BLACK, INDIAN® CHALLENGER	
7	551-1880	BRACKET, ASSEMBLY, LEFT, BAG MOUNT, POWDERCOATED, INDIAN® CHALLENGER	1
8	551-2358	HARDWARE KIT, LONG QUALIFIER, 2 INTO 1, 2020-UP INDIAN® CHALLENGER	
551-2358 HARDWARE KIT BILL OF MATERIALS			
8A	551-1129	GASKET, MUFFLER, 1.75 ID X 2.0 OD X 1.75 LENGTH	1
8B	551-0402	CLAMP, HOSE, WORM DRIVE, SAE #40	1
8C	551-1272	CLAMP, MUFFLER, BAND STYLE, M8-1.25 X 60mm BOLT, 2.5 DIAMETER	1
8D	551-1181	CLAMP, BAND STYLE, 52-55mm	1
8E	551-1942	SPACER, 1.125 OD X .410 ID X .25, BLACK, ALUMINUM, 6061	2
8F	500-1354	SCREW, BHC, M8 X 1.25 X 14mm, STAINLESS STEEL	2
8G	551-2113	PLATE, NUT, M6 X 1, 33mm HOLE SPACING, STAINLESS STEEL	2
8H	500-1189	SCREW, BHC, M8 X 16mm, STAINLESS STEEL	2
8I	500-1100	NUT, LOCK, NYLON INSERT, M8 X 1.25mm X 13mm X 8mm, STAINLESS STEEL	2
8J	500-0791	CLAMP, HOSE, WORM DRIVE, SAE #24	6

# Safety and Warranty Info:

## DISCLAIMER:

S&S parts are designed for high performance, closed course, racing applications and are intended for the very experienced rider only. The installation of S&S parts may void or adversely affect your factory warranty. In addition such installation and use may violate certain federal, state, and local laws, rules and ordinances as well as other laws when used on motor vehicles used on public highways, especially in states where pollution laws may apply. Always check federal, state, and local laws before modifying your motorcycle. It is the sole and exclusive responsibility of the user to determine the suitability of the product for his or her use, and the user shall assume all legal, personal injury risk and liability and all other obligations, duties, and risks associated therewith.

FOR CLOSED COURSE COMPETITION USE ONLY. NOT INTENDED FOR STREET USE. LEGAL IN CALIFORNIA ONLY FOR RACING VEHICLES WHICH MAY NEVER BE USED, OR REGISTERED OR LICENSED FOR USE, UPON A HIGHWAY. NOT LEGAL FOR SALE OR USE NATIONWIDE ON ANY FEDERAL POLLUTION CONTROLLED MOTOR VEHICLE UNDER THE CLEAN AIR ACT.

## SAFE INSTALLATION AND OPERATION RULES:

Before installing your new S&S part it is your responsibility to read and follow the installation and maintenance procedures in these instructions and follow the basic rules below for your personal safety.

- Gasoline is extremely flammable and explosive under certain conditions and toxic when breathed. Do not smoke. Perform installation in a well ventilated area away from open flames or sparks.
- If motorcycle has been running, wait until engine and exhaust pipes have cooled down to avoid getting burned before performing any installation steps.
- Before performing any installation steps disconnect battery to eliminate potential sparks and inadvertent engagement of starter while working on electrical components.
- Read instructions thoroughly and carefully so all procedures are completely understood before performing any installation steps. Contact S&S with any questions you may have if any steps are unclear or any abnormalities occur during installation or operation of motorcycle with a S&S part on it.
- Consult an appropriate service manual for your motorcycle for correct disassembly and reassembly procedures for any parts that need to be removed to facilitate installation.
- Use good judgment when performing installation and operating motorcycle. Good judgment begins with a clear head. Don't let alcohol, drugs or fatigue impair your judgment. Start installation when you are fresh.
- Be sure all federal, state and local laws are obeyed with the installation.
- For optimum performance and safety and to minimize potential damage to carb or other components, use all mounting hardware that is provided and follow all installation instructions.
- Motorcycle exhaust fumes are toxic and poisonous and must not be breathed. Run motorcycle in a well ventilated area where fumes can dissipate.

## IMPORTANT NOTICE:

Statements in this instruction sheet preceded by the following words are of special significance.



### WARNING

Means there is the possibility of injury to yourself or others.



### CAUTION

Means there is the possibility of damage to the part or motorcycle.

### NOTE

*Other information of particular importance has been placed in italic type.*

*S&S recommends you take special notice of these items.*

## WARRANTY:

All S&S parts are guaranteed to the original purchaser to be free of manufacturing defects in materials and workmanship for a period of twelve (12) months from the date of purchase. Merchandise that fails to conform to these conditions will be repaired or replaced at S&S's option if the parts are returned to us by the purchaser within the 12 month warranty period or within 10 days thereafter.

In the event warranty service is required, the original purchaser must call or write S&S immediately with the problem. Some problems can be rectified by a telephone call and need no further course of action.

A part that is suspect of being defective must not be replaced by a Dealer without prior authorization from S&S. If it is deemed necessary for S&S to make an evaluation to determine whether the part was defective, a return authorization number must be obtained from S&S. The parts must be packaged properly so as to not cause further damage and be returned prepaid to S&S with a copy of the original invoice of purchase and a detailed letter outlining the nature of the problem, how the part was used and the circumstances at the time of failure. If after an evaluation has been made by S&S and the part was found to be defective, repair, replacement or refund will be granted.

## ADDITIONAL WARRANTY PROVISIONS:

- (1) S&S shall have no obligation in the event an S&S part is modified by any other person or organization.
- (2) S&S shall have no obligation if an S&S part becomes defective in whole or in part as a result of improper installation, improper maintenance, improper use, abnormal operation, or any other misuse or mistreatment of the S&S part.
- (3) S&S shall not be liable for any consequential or incidental damages resulting from the failure of an S&S part, the breach of any warranties, the failure to deliver, delay in delivery, delivery in non-conforming condition, or for any other breach of contract or duty between S&S and a customer.
- (4) S&S parts are designed exclusively for use in Harley-Davidson® and other American v-twin motorcycles. S&S shall have no warranty or liability obligation if an S&S part is used in any other application.

**14025 Cty Hwy G**

**Viola, Wisconsin 54664**

Phone: 608-627-1497 • Fax: 608-627-1488

Technical Service Phone: 608-627-TECH (8324)

Technical Service Email: [sstech@sscycycle.com](mailto:sstech@sscycycle.com)

Website: [www.sscycycle.com](http://www.sscycycle.com)